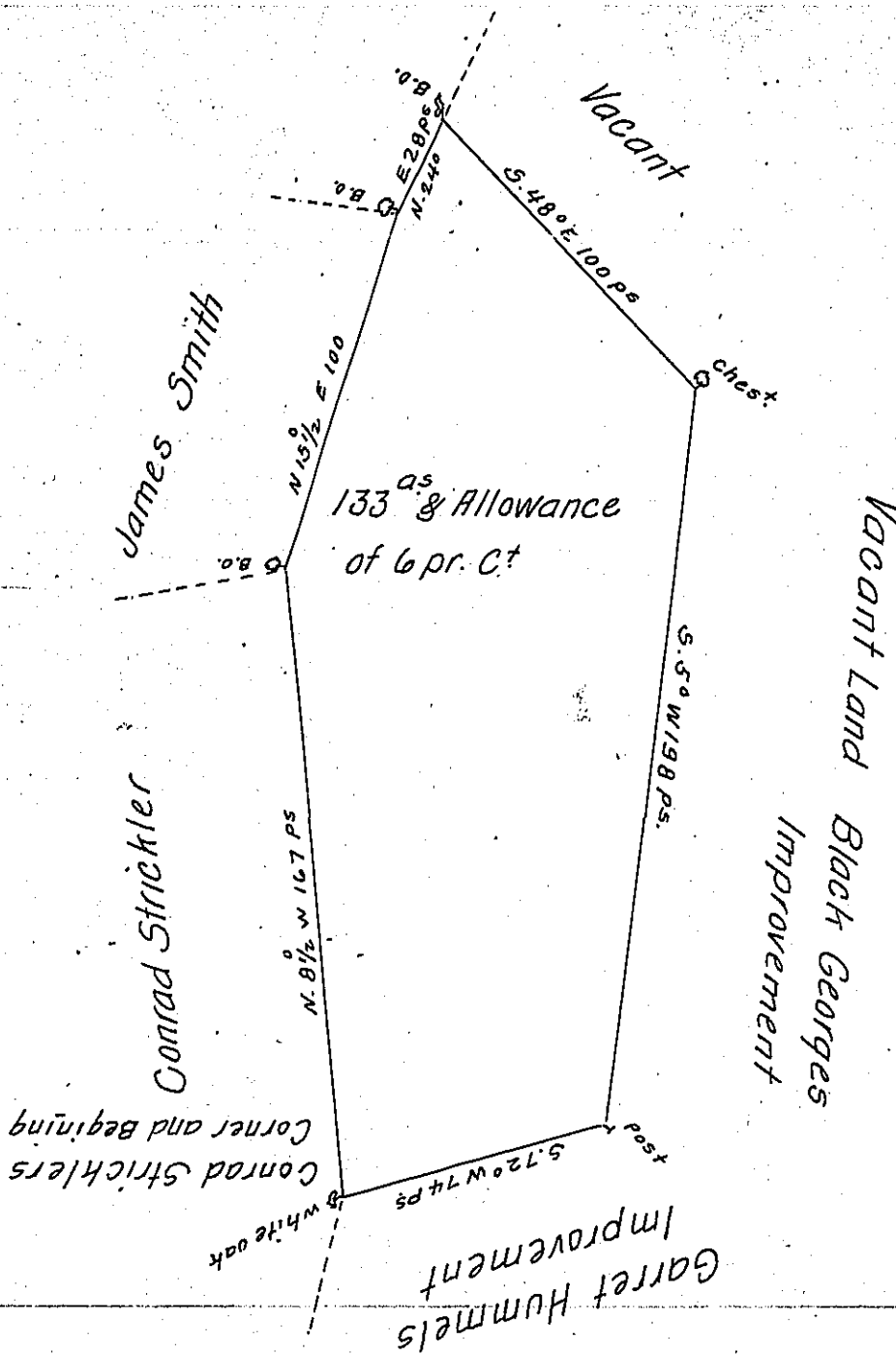


No	Cours.	Dist.	Nor.	Sou.	East	West
1.	N. 8 1/2° W	167	165.1	-	-	26.1
2.	N. 15 1/2° E	100	96.3	-	26.7	-
3.	N. 24° E	28	25.6	-	11.4	-
4.	S. 48° E	100	-	66.9	74.3	-
5.	S. 55° W	198	-	197.2	-	17.2
6.	S. 72° W	74	-	22.2	-	-1.8
			287.0	286.3	112.4	-1.8



A Draught of a tract of Land Situate in Manchester township York County Surveyed to James Smith Esq^r Assignee of John Thornton in pursuance of a Warrant from the Honourable Proprietaries for 100^a dated the 22^d day of July 1762. Surveyed the 6th of the 12th m^o 1764.

pr

W^m Matthews -

To John Lukens Surveyor Gen^l

IN TESTIMONY that the above is a copy of the original remaining on file in the Department of Internal Affairs of Pennsylvania, made conformably to an Act of Assembly approved the 16th day of February, 1833, I have hereunto set my Hand and caused the Seal of said Department to be affixed at Harrisburg, this fifteenth day of November 1906.

Isaac R. Brown
Secretary of Internal Affairs.